



## Primary Kitchen





# Create your own oasis

We believe the kitchen is the best place in any home. Of course, it's where meals are cooked and served, but more importantly it's where our lives happen, and memories are made. As an innovative cabinet company, we're dedicated to bringing you high-quality, custom kitchens faster than anyone else. We offer a variety of finishes, several door styles, and high-end cabinet systems to compliment any design style. From traditional to modern, to farmhouse and industrial — our kitchens are designed for life.













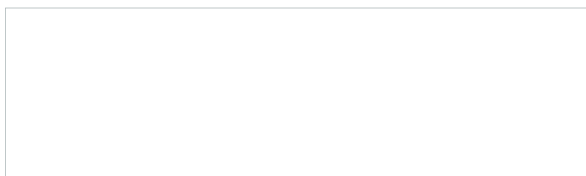






This stunning modern mountain home features our DS5 door style in the Shift Series Rustic Light Brown Oak finish as the perimeter cabinets. The high-gloss island is our DS1 doors and drawers in the Reflection Series Pure White finish with a cutout in the Rustic Light Brown Oak to match the cabinets.

Reflection – Pure White



Shift – Rustic Light Brown Oak





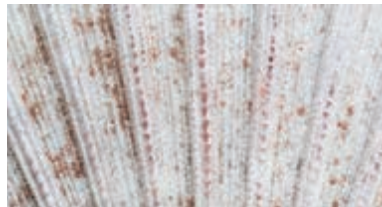










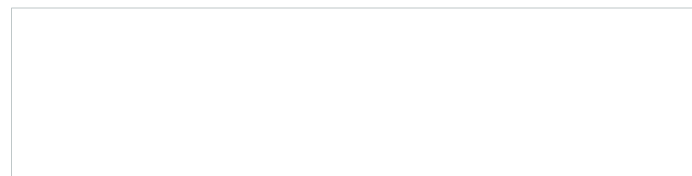


Highlighting the color of the sun and the reflection of the sea, the yellow high-gloss island shines in this elegant beach house. The kitchen's clean lines are created using our DS1 doors and drawers in our Reflection Series Primary Yellow and Optimat Pure White finishes.

Reflection – Primary Yellow



Optimat – Pure White









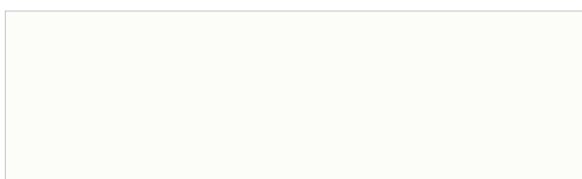


This hillside country home comforts the senses with a contemporary farmhouse design. Featuring the DS5x character door on the end of the island, along with our DS5 door style in the Rustic Chestnut Oak and Optimat White finishes with matte black hardware.

Shift – Rustic Chestnut Oak



Optimat – White







“Everything  
in the kitchen  
Life happens  
in the kitchen

*Andrew Zimmern*



---

ing happens  
itchen.  
opens in  
hen.”









Creating a serene space in an upscale estate, this kitchen calms and comforts in our Optimat Navy hue. The built-in coffee bar and perimeter cabinets are our DS5 door style and DS5f with clear glass, while the island is our DS5 in the Shift Linear Chestnut heartwood finish.

Optimat – Navy



Shift – Linear Chestnut Heartwood



















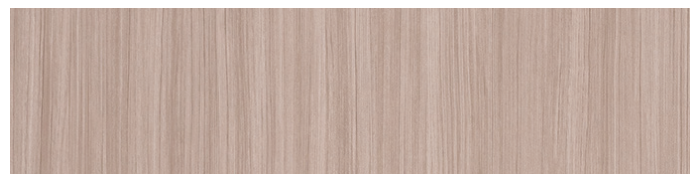


A cheerful bungalow with a wall of Spanish tile that perfectly complements the choices of the cabinet finishes. The island features our Optimat Sage and the perimeter cabinets are our Shift Linear Beige Heartwood in DS5 and DS5f doors with clear glass inserts.

Optimat – Sage



Shift – Linear Beige Heartwood















---

This modern kitchen makes a statement with the bold section of our sleek Reflection Red high-gloss paired with our soft-touch Optimat Stone finish. The modern design is achieved with clean lines created by our DS1 doors and drawers.

Reflection – Red



Optimat – Stone



# Design Styles

## Traditional

Warm and welcoming, this style is all about embellished details. Every element of a traditional kitchen is thought out to be eye-catching and ornate, including crown moldings, island legs, beamed ceilings, and antique pieces. We suggest our DS5 and DS5g doors in our Shift and Optimat Series to achieve this desired style.

## Modern

Always described for its sleekness – a modern kitchen's signature elements are frameless cabinetry, slab doors, horizontal lines, and the lack of elaborate décor. The selected colors and finishes take center stage in this style and set the tone for the space. All our DS1 doors would be perfect in this style.

## Contemporary

Influenced by popular styles of our present day, contemporary design is constantly evolving to by borrowing qualities from modern, minimalist, and industrial styles. Contemporary kitchens combine a curated mix of old and new materials that look polished, but feel casual. Notable characteristics include neutral palettes, clean lines, and natural textures. We recommend all of our door styles; and Shift, Metall and Optimat series in neutral colors.

## Transitional

The happy medium between modern and traditional styles – transitional style strikes a balance between the embellishment of traditional design, and overt sleekness of modern design. Crisp lines cross over from modern style, but the cabinet doors still have some dimension like our 3-piece, 5-piece, and 5-piece with glass doors. Finishes should be kept neutral or textural with simple hardware.

## Mid-Century Modern

Defined by an era of time, mid-century modern describes the architecture, furniture, and graphic design from the middle of the 20th century (1940s to 1960s). It's a distinctive style with clean lines, simple silhouettes, lots of wood, and warm colors. A minimalistic approach allows the choices of traditional and non-traditional materials to create the aesthetic. Our Shift and Optimat finishes are perfect for this design style.

## Industrial

Purposely unfinished, this no-nonsense design style embraces exposed and raw materials. Inspiration came from old, refurbished manufacturing warehouses that preserved exposed brick, pipes, beams, concrete. Our Metall Series is a great option, and the darker finishes in Shift and Optimat would also work well to achieve this look.

## Shabby-Chic

Romantic and charming, Shabby Chic design involves a revived appreciation in vintage pieces that have a faded elegance. Florals paired with pale palettes and distressed furnishings creates a soft style that still feels fresh. Our Optimat Series is a great choice for this style, as well as our Shift Series in the rustic finishes.

## Eclectic

This style is a perfect representation of the phrase "mix and match". Mix contrasting elements including colors, materials, and furnishings. Match with a few grounding neutrals to tie the room together. With no definitive rules to follow, any of our door styles and finishes could be used to curate a space that's a unique mixture of diverse pieces.



## Scandinavian

Light, bright and airy – Scandinavian design is best described for its usage of white and other light colors and woodgrains; incorporating natural light; and creating space with large mirrors and minimal furniture. Inspired by the simplicity of Nordic countries' interiors, this style became an internationally coveted for those looking to emphasize an elegant and airy aesthetic.

## Rustic

Rustic interior design embraces raw and unrefined elements to bring in beauty from the outside world. Weathered wood is often the primary material used to create a natural look, among other materials such as stone and metal. Our Shift Series offers numerous woodgrain options, including three rustic oaks.

## Bohemian

A bold design style that encourages mixing rich patterns, vibrant colors, and layered textiles. The combinations of mismatched elements come together to create a unique space inspired by unconventional rules. Pick a bright color from our Reflection series to help achieve the Bohemian style.

## Vintage

Giving the past a place in the present, vintage designs focus on a few antique pieces combined with more modern elements for an elegant look. The use of soft colors and flowing lines give off a romantic, yet luxurious feeling. Our Shift and Optimat series work best for this design type.

“An empty room is a story waiting to happen, and you are the author.”

*Charlotte Moss*

## Minimalist

Based on the principle that "less is more", minimalist designs are clean and simple with streamlined forms and structure. The color palette is kept neutral and emphasizes elements that are pared down without ornamentation or decoration. The design style thrives on only using essential components that are necessary for any space. The DS1 door is perfect for this style.

## Coastal

A casual style that pulls in natural elements inspired by the sun, sky, sand, and sea. The space will evoke a refreshed feeling and create a relaxed atmosphere. Light neutral colors with highlights of blue, green and yellow work best to achieve a coastal design. Check our Reflection, Optimat, and Shift series for color options.









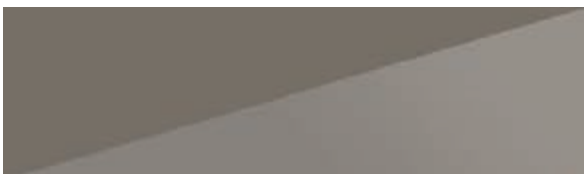




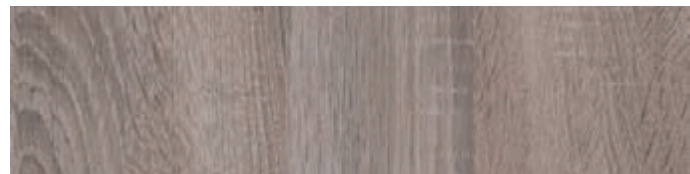
Escape to a cozy winter wonderland in this mountain house featuring our DS5 door style in the Shift Rustic Silver Oak finish as the perimeter cabinets. The high-gloss island is in our DS1 doors in the Reflection Stone finish with a cutout in the Rustic Silver Oak to match the cabinets.



Reflection – Stone



Shift – Rustic Silver Oak









This luxury beach house keeps things light and cool on the inside with monotone color palette and crisp, clean lines in the kitchen. To create some dimension without going to a full 5-piece door, the cabinets are done in a DS3 door style in our Optimat Pebble and Shift Slate finishes.



Optimat – Pebble



Shift – Forest Grey

















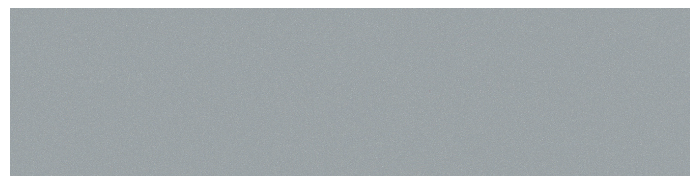


This tranquil villa creates a sense of calm and comfort with warm woodgrains and soft-touch matte finishes. Featuring the DS5x character door on the end of the island, along with our DS5 door style in the Shift Heather Cream and Optimat Silver Effect finishes.

Shift – Heather Cream



Optimat – Silver Effect



---

“Honestly, I could  
of the rest of the  
and just live in

*Adrian Kahan*



ould get rid  
ne house  
the kitchen.”













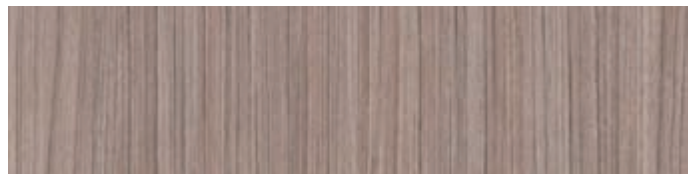
This charming kitchen embraces a simple sophistication using cool-tone color palette with gold hardware and accessories. The perimeter cabinets are done in our Reflection Grey DS5 door style and DS5f with clear glass, while the island is our DS5 in the Shift Linear Silver heartwood finish.



Reflection – Grey



Shift – Linear Silver Heartwood









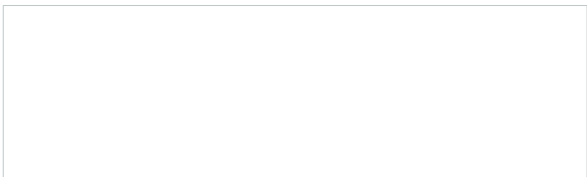


This kitchen was inspired by the black and white elements of a modern tuxedo kitchen, but with a transitional style twist. The island features our Optimat White and the perimeter cabinets are in our Shift Linear Black Heartwood in DS5 and DS5f doors with clear glass inserts.

Shift – Linear Black Heartwood



Optimat – White















Modern and minimalist, this kitchen has an understated elegance with our soft-touch Optima Black and a warm woodgrain finish in Shift Linear Tan Heartwood. An ultra-modern design is achieved with the clean lines of our DS1 and DS1h door styles.

Optimat – Black



Shift – Linear Tan Heartwood (Horizontal)









(302) 436-6261

info@ThatCabinetStore.com

www.ThatCabinetStore.com

50 N Main St, Selbyville, DE 19975



## Headquarters

12000 E. 56th Ave | Denver, CO 80239 — 336.653.6290 — info@primarykitchen.com — primarykitchen.com